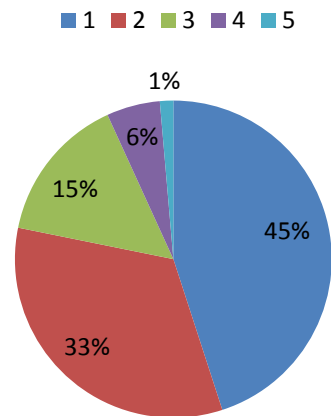


MUKAND LAL NATIONAL COLLEGE, RADAUR

Student Satisfaction Survey Report 2017-18

Option	Q.1	Q.2	Q.3	Q.4	Q.5	Q.6	Q.7	Q.8	Q.9	Q.10	Q.11	Q.12	Q.13	Q.14	Q.15	Q.16	Q.17	Q.18	Q.19	Q.20	Total	%
4	7	6	7	5	4	6	1	4	6	6	3	6	7	6	5	3	6	4	0	7	99	45
3	4	5	4	4	5	5	8	5	1	1	7	3	1	1	2	4	3	6	1	3	73	33.18
2	0	0	0	2	0	0	1	2	4	3	1	2	3	1	4	4	2	1	2	1	33	15
1	0	0	0	0	2	0	1	0	0	0	0	0	0	3	0	0	0	0	6	0	12	5.45
0	0	0	0	0	0	0	0	0	0	0	0	0	0	0	0	0	0	0	2	0	3	1.37

Student Satisfaction Survey Report 2017-18



STUDENT SATISFACTION SURVEY FORM

1. How much of the syllabus was covered in the class?4 – 85 to 100%
3 – 70 to 84%
2 – 55 to 69%
1– 30 to 54%
0 –Below 30%
2. How well did the teachers prepare for the classes?4 –Thoroughly
3 – Satisfactorily
2 – Poorly
1 – Indifferently
0 – Won't teach at all
3. How well were the teachers able to communicate?4 – Always effective
3 – Sometimes effective2 – Just satisfactorily 1–
Generally ineffective
0– Very poor communication
4. The teacher's approach to teaching can best be described as4– Excellent
3 – Very good2 – Good
1 – Fair
0– Poor
5. Fairness of the internal evaluation process by the teachers.4 – Always fair
3 – Usually fair
2 – Sometimes unfair1 – Usually unfair
0– Unfair
6. Was your performance in assignments discussed with you?4 – Every time
3 – Usually
2 – Occasionally/Sometimes
1 – Rarely
0– Never
7. The institute takes active interest in promoting internship, student exchange, field visitopportunities for students.
4 – Regularly
3 – Often
2 – Sometimes
1 – Rarely
0– Never

8. The teaching and mentoring process in your institution facilitates you in cognitive, social and emotional growth.
 - 4 – Significantly
 - 3 – Very well
 - 2 – Moderately
 - 1 – Marginally
 - 0 – Not at all
9. The institution provides multiple opportunities to learn and grow.
 - 4 – Strongly agree
 - 3 – Agree
 - 2 – Neutral
 - 1 – Disagree
 - 0 – Strongly disagree
10. Teachers inform you about your expected competencies, course outcomes and programme outcomes.
 - 4 – Every time
 - 3 – Usually
 - 2 – Occasionally/Sometimes
 - 1 – Rarely
 - 0 – Never
11. Your mentor does a necessary follow-up with an assigned task to you.
 - 4 – Every time
 - 3 – Usually
 - 2 – Occasionally/Sometimes
 - 1 – Rarely
 - 0 – I don't have a mentor
12. The teachers illustrate the concepts through examples and applications.
 - 4 – Every time
 - 3 – Usually
 - 2 – Occasionally/Sometimes
 - 1 – Rarely
 - 0 – Never
13. The teachers identify your strengths and encourage you with providing right level of challenges.
 - 4 – Fully
 - 3 – Reasonably
 - 2 – Partially
 - 1 – Slightly
 - 0 – Unable to
14. Teachers are able to identify your weaknesses and help you to overcome them.
 - 4 – Every time
 - 3 – Usually
 - 2 – Occasionally/Sometimes
 - 1 – Rarely
 - 0 – Never

15. The institution makes effort to engage students in the monitoring, review and continuous quality improvement of the teaching learning process.
- 4 – Strongly agree
 - 3 – Agree
 - 2 – Neutral
 - 1 – Disagree
 - 0 – Strongly disagree
16. The institute/ teachers use student centric methods, such as experiential learning, participative learning and problem solving methodologies for enhancing learning experiences.
- 4 – To a great extent
 - 3 – Moderate
 - 2 – Some what
 - 1 – Very little
 - 0 – Not at all
17. Teachers encourage you to participate in extracurricular activities.
- 4 – Strongly agree
 - 3 – Agree
 - 2 – Neutral
 - 1 – Disagree
 - 0 – Strongly disagree
18. Efforts are made by the institute/ teachers to inculcate soft skills, life skills and employability skills to make you ready for the world of work.
- 4 – To a great extent
 - 3 – Moderate
 - 2 – Some what
 - 1 – Very little
 - 0 – Not at all
19. What percentage of teachers use ICT tools such as LCD projector, Multimedia, etc. while teaching.
- 4 – Above 90%
 - 3 – 70 – 89%
 - 2 – 50 – 69%
 - 1 – 30 – 49%
 - 0 – Below 29%
20. The overall quality of teaching-learning process in your institute is very good.
- 4 – Strongly agree
 - 3 – Agree
 - 2 – Neutral
 - 1 – Disagree
 - 0 – Strongly disagree